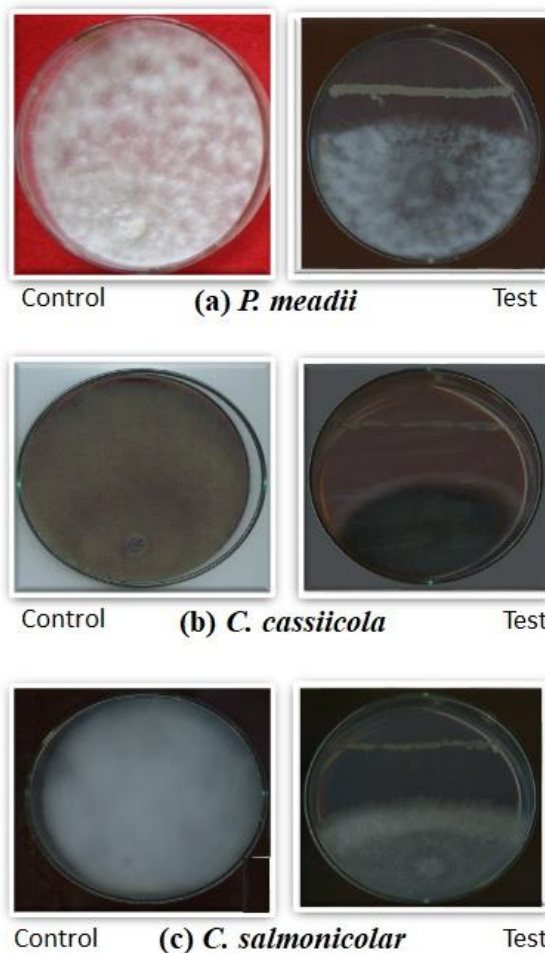




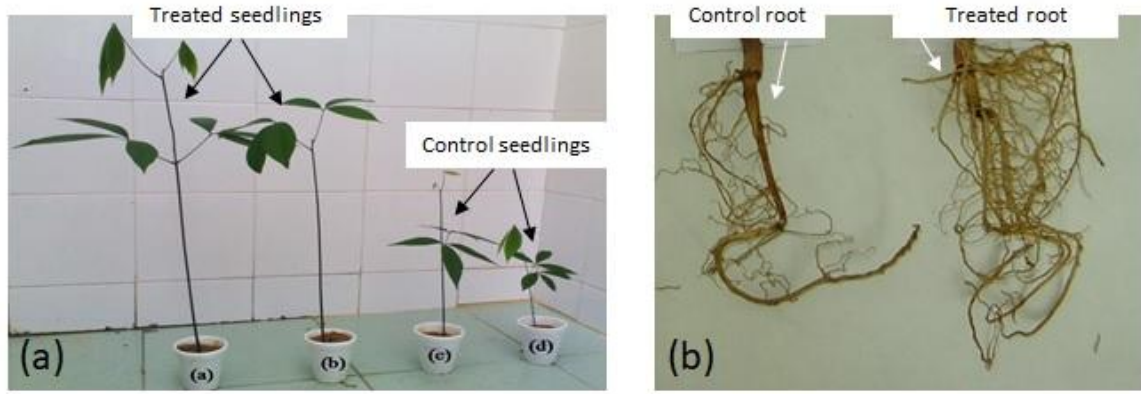
Growth promoting activities of antagonistic bacterial endophytes from *Hevea brasiliensis* (Willd. ex A.Juss.) Müll.Arg.

Amith Abraham^{1,*#}, Shaji Philip¹, Joby Joseph¹, Pramod S¹, Kuruville C Jacob¹, Raveendran Sindhu³, Ashok Pandey⁴,
Byoung-In Sang⁵ & Kochupurackal Jayachandran²

Supplementary Data



Suppl. Fig. 1 — Dual culture plate showing antagonistic activity of bacterial endophytes against major pathogens of *H. brasiliensis*



Suppl. Fig. 2. — Growth promoting activity of antagonistic bacterial endophytes on (a) *H. brasiliensis* seedling and (b) root morphology of control and treated seedlings