

Electronic Supplementary Data

Transition metal ion (Ni^{2+} , Cu^{2+} and Zn^{2+}) doped defect pyrochlore, KTaTeO_6 : Synthesis, characterization and photocatalytic studies

M Sudheera^a, P Venkataswamy^b, K Ramaswamy^{b,c}, G Ravi^b, N Chittibabu^d & M Vithal^{b,*}

^aDepartment of Chemical Engineering, RVR and JC College of Engineering, Chowdavaram, Guntur 522 019, India

^bDepartment of Chemistry, University College of Science, Osmania University, Hyderabad 500 007, India

^cCentre for Materials for Electronics Technology (C-MET), Cherlapally, HCL (PO), Hyderabad 500 051, India

^dDepartment of Chemical Engineering, Andhra University, Visakhapatnam 530 003, India

*E-mail: mugavithal@gmail.com

S. No.	Contents	Pg. No.
1	Table S1 — Wt% of elements in KTTO, Ni-KTTO, Cu-KTTO and Zn-KTTO obtained from EDX results	2
2	Fig. S1 — SEM images of (a) KTTO, (b) Ni-KTTO, (c) Cu-KTTO and (d) Zn-KTTO	2
3	Fig. S2 — EDX images of (a) KTTO, (b) Ni-KTTO, (c) Cu-KTTO and (d) Zn-KTTO	3

Table S1 — Wt% of elements in KTTO, Ni-KTTO, Cu-KTTO and Zn-KTTO obtained from EDX results

Sample Name	Wt %						
	K	Ta	Te	O	Ni	Cu	Zn
KTTO	9.1	37.9	32.9	20.1	--	--	--
Ni-KTTO	--	42.7	39.7	8.8	8.8	--	--
Cu-KTTO	--	38.3	26.5	9.6	--	25.6	--
Zn-KTTO	--	41.9	40.1	8.1	--	--	9.9

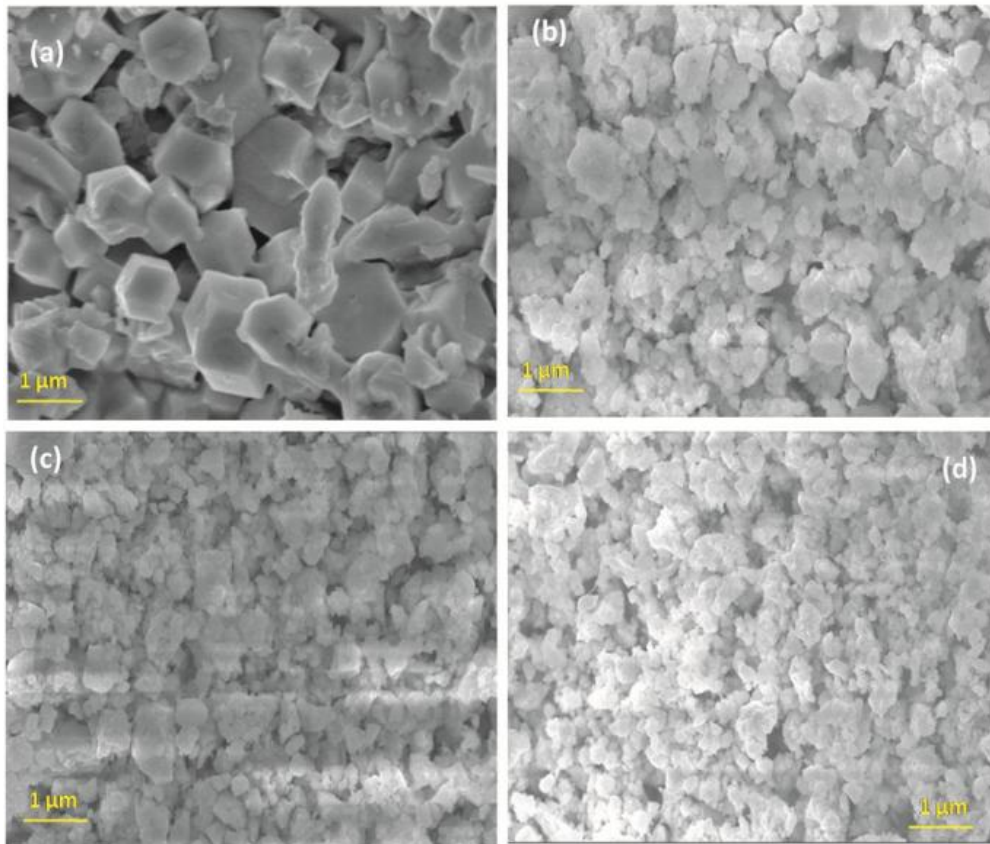


Fig. S1 — SEM images of (a) KTTO, (b) Ni-KTTO, (c) Cu-KTTO and (d) Zn-KTTO

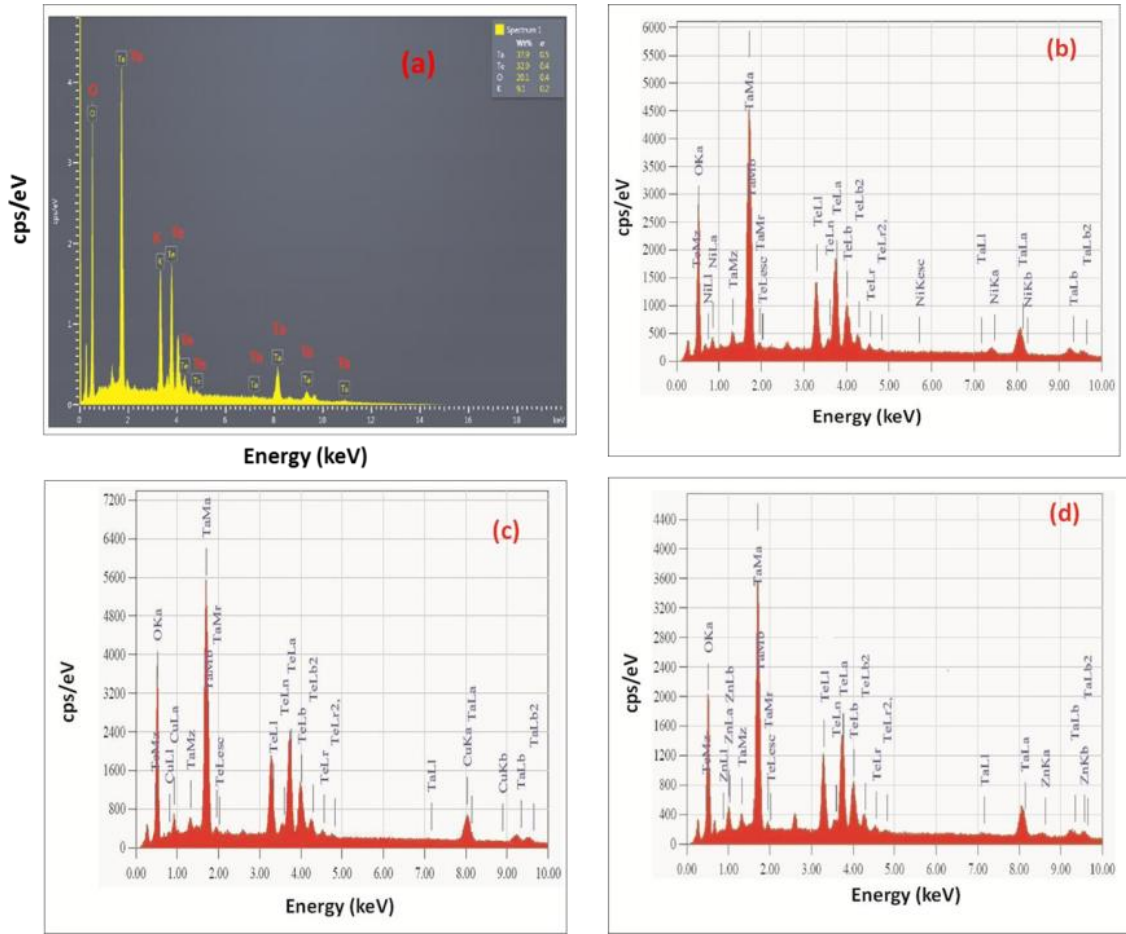


Fig. S2 — EDX images of (a) KTTO, (b) Ni-KTTO, (c) Cu-KTTO and (d) Zn-KTTO