

Electronic Supplementary Data

Selective detection of fluoride and hydrogen sulfate anions by pyrimidine-based fluorescence chemosensor

Soumya R Thakur, R Behura, S Behera, Rajesh B Sayala, Arun K Barick, Ramakrishna D S & Bigyan R Jali*

Department of Chemistry, Veer Surendra Sai University of Technology, Burla, Sambalpur 768 018, Odisha, India

*E-mail: bigyan.Jali7@gmail.com

S. No.	Contents	Pg. No.
1	Fig. S1 — $^1\text{H-NMR}$ of L in DMSO-d_6	2
2	Fig. S2 — $^1\text{H-NMR}$ of L (in DMSO-d_6) with F^- (in D_2O)	2
3	Fig. S3 — $^{13}\text{C-NMR}$ spectra of L in DMSO-d_6	3
4	Fig. S4 — FTIR of L	3
5	Fig. S5 — Fluorescence spectra of L (10^{-5} M) in addition of 10 μL each aliquots of Cl^- ions (10^{-5} M)	3
6	Fig. S6 — Fluorescence spectra of L (10^{-5} M) in addition of 10 μL each aliquots of Br^- ions (10^{-5} M)	4
7	Fig. S7 — Fluorescence spectra of L (10^{-5} M) in addition of 10 μL each aliquots of NO_3^- ions (10^{-5} M)	4
8	Fig. S8 — Fluorescence spectra of L (10^{-5} M) in addition of 10 μL each aliquots of H_2PO_4^- ions (10^{-5} M)	4
9	Fig. S9 — Fluorescence spectra of L (10^{-5} M) in addition of 10 μL each aliquots of ClO_4^- ions (10^{-5} M)	5
10	Fig. S10 — Color changes from light green to color-less upon addition of F^- and HSO_4^-	5
11	Fig. S11 — Mass spectra of L	5

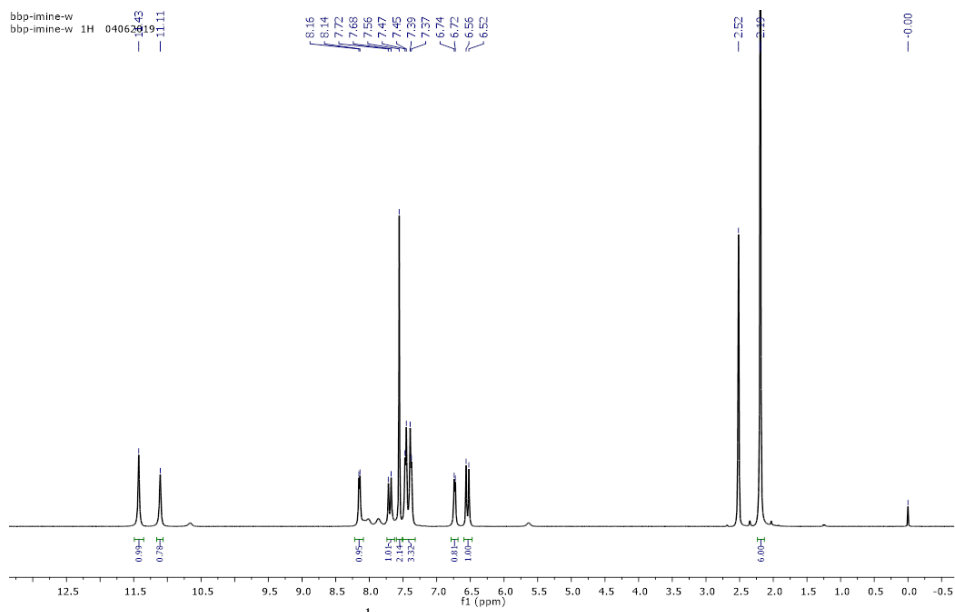


Fig. S1 — $^1\text{H-NMR}$ spectra of **L** in DMSO-d_6

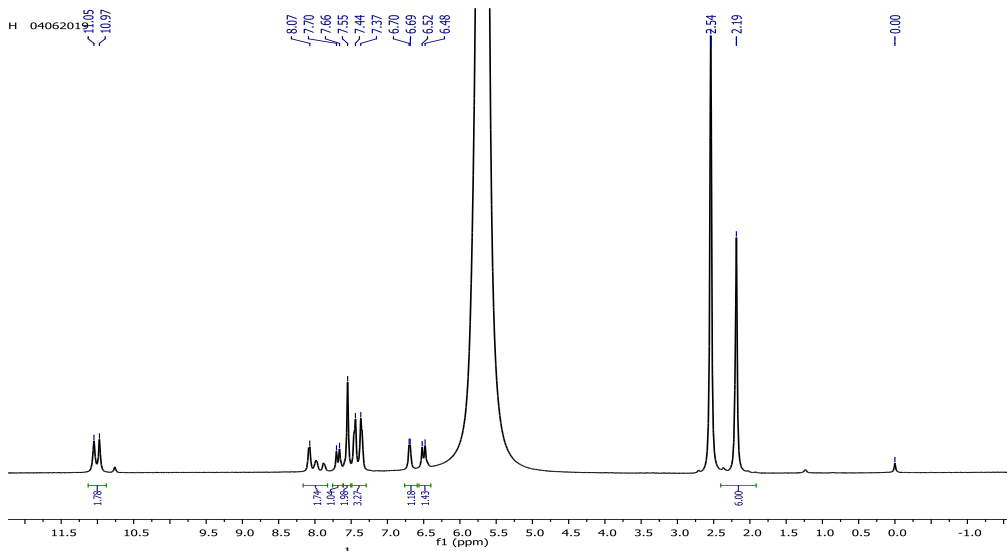


Fig. S2 — $^1\text{H-NMR}$ of **L** (in DMSO-d_6) with F^- (in D_2O)

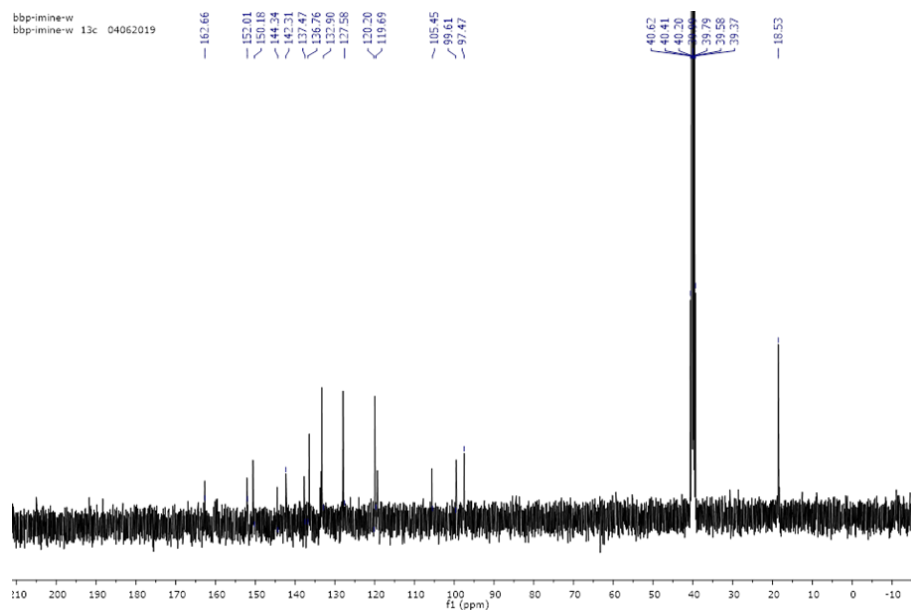


Fig. S3 — ^{13}C -NMR spectra of **L** in DMSO-d_6

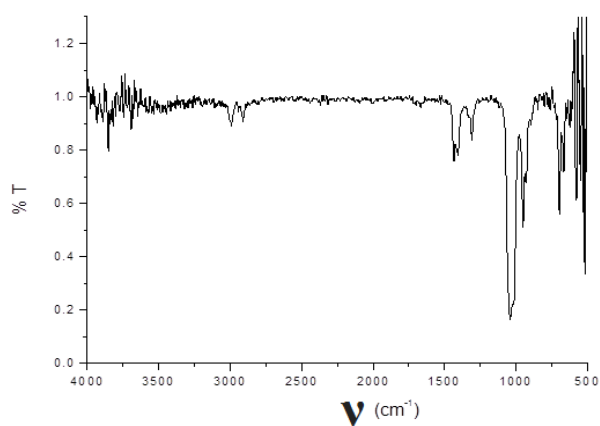


Fig. S4 — FTIR of **L**

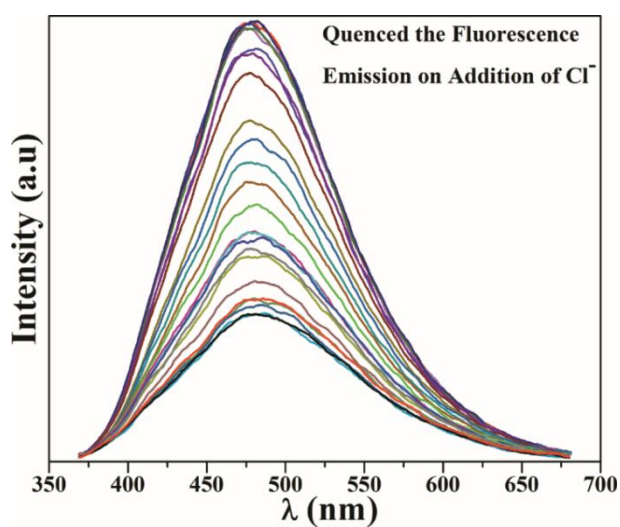


Fig. S5 — Fluorescence spectra of **L** (10^{-5} M) in addition of $10\ \mu\text{L}$ each aliquots of Cl^- ions (10^{-5} M)

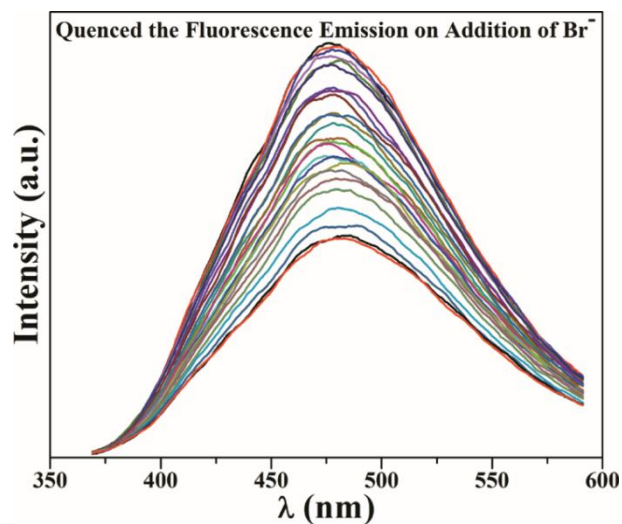


Fig. S6 — Fluorescence spectra of **L** (10^{-5} M) in addition of 10 μL each aliquots of Br^- ions (10^{-5} M)

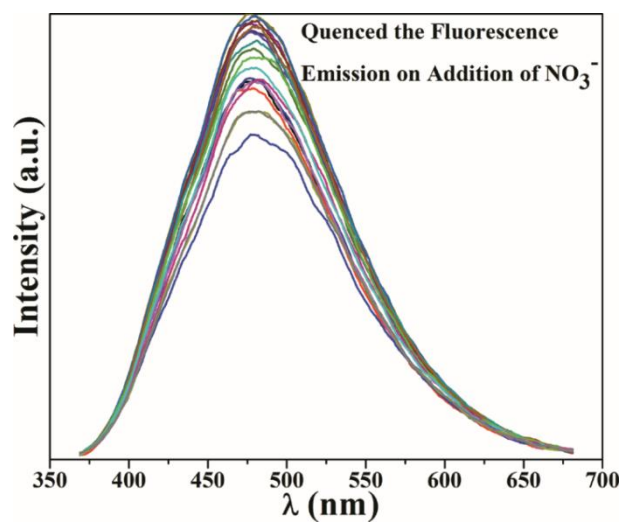


Fig. S7 — Fluorescence spectra of **L** (10^{-5} M) in addition of 10 μL each aliquots of NO_3^- ions (10^{-5} M)

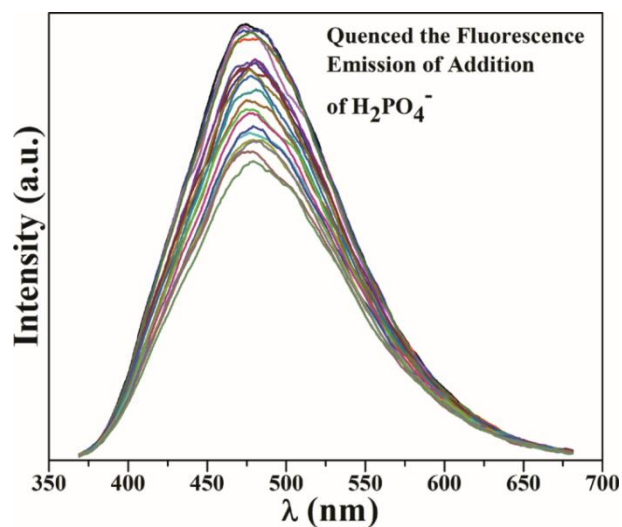


Fig. S8 — Fluorescence spectra of **L** (10^{-5} M) in addition of 10 μL each aliquots of H_2PO_4^- ions (10^{-5} M)

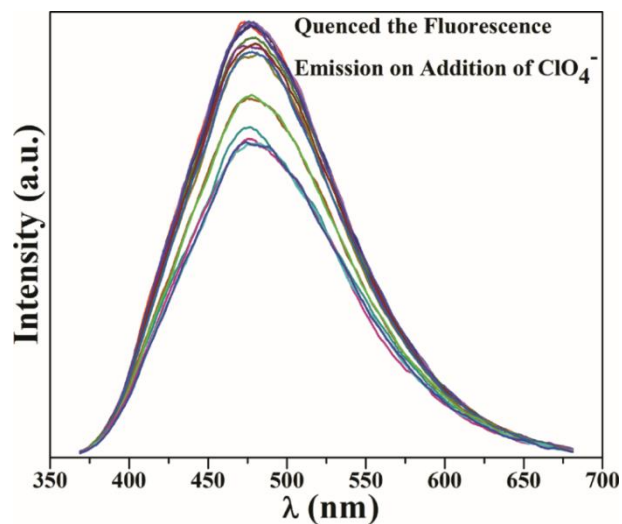


Fig. S9 — Fluorescence spectra of **L** (10^{-5} M) in addition of 10 μ L each aliquots of ClO_4^- ions (10^{-5} M)

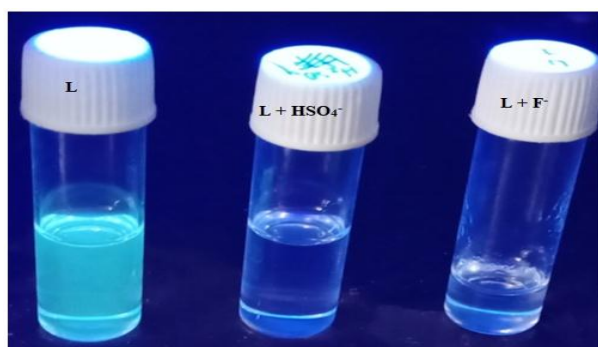


Fig. S10 — Color changes from light green to color-less upon addition of F^- and HSO_4^-

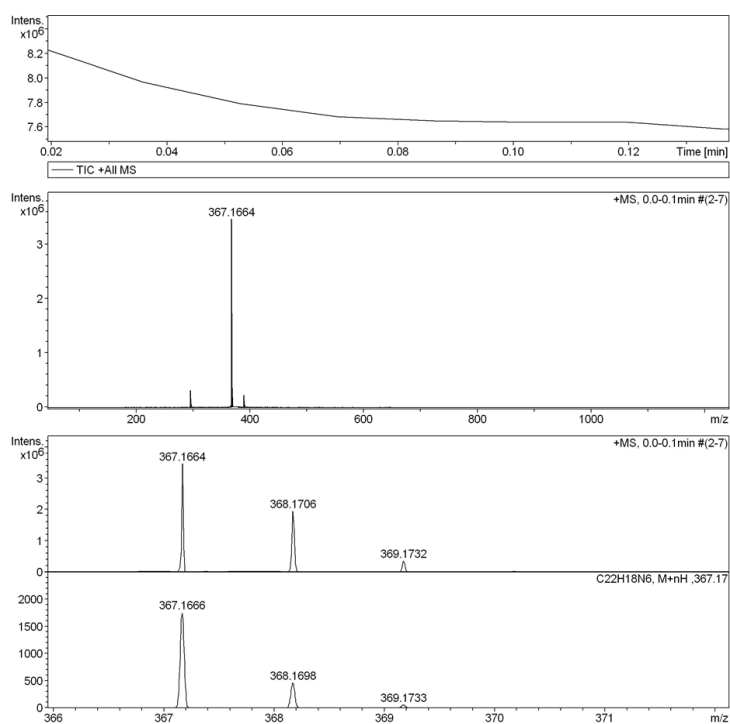


Fig. S11 — Mass spectra of **L**